

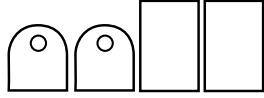
WILDLIFE™ KITE ASSEMBLY INSTRUCTIONS

STOCK NO. 554 (S.V. 854)

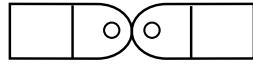
PLACE
AT TOP
OF KITE

PARTS INCLUDED:

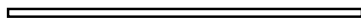
• 2 Corner Tabs & 2 Reinforcements



• One Center Tab



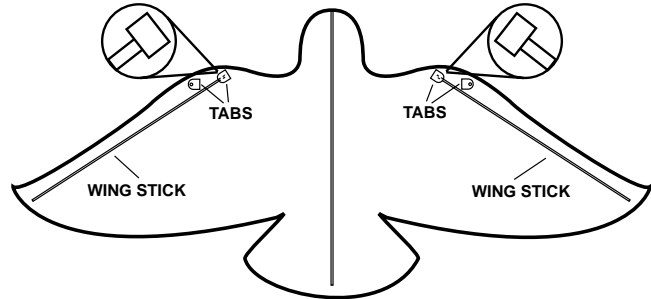
• One Cross Stick



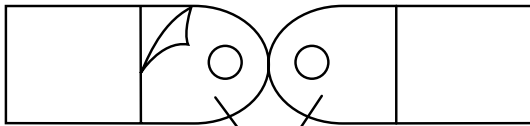
• Two Plastic Endcaps



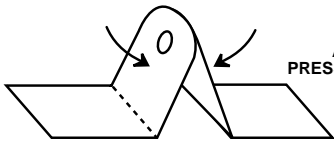
1. Place kite face down. Remove backing sheet from CORNER TABS and align their holes with the holes in the kite wings with square end pointed inward. Press firmly. Take the two reinforcements and place them on top of the wing stick for strength as shown.



2. Remove center portion of backing sheet from CENTER TAB. Align center holes and press together firmly as shown. Do not remove backing on end tabs until step 3.



REMOVE CENTER BACKING ONLY

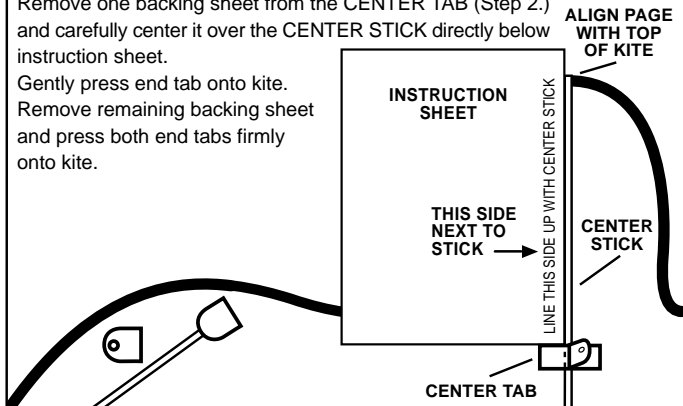


ALIGN HOLES & PRESS TOGETHER FIRMLY

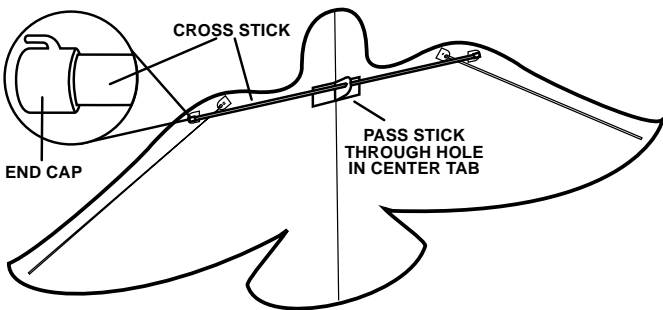
3. Place this sheet next to the center stick as shown. Align instruction sheet with top of kite as shown below.

Remove one backing sheet from the CENTER TAB (Step 2.) and carefully center it over the CENTER STICK directly below instruction sheet.

Gently press end tab onto kite. Remove remaining backing sheet and press both end tabs firmly onto kite.



4. Insert CROSS STICK through hole in CENTER TAB. Place ENDCAPS on CROSS STICK and insert into CORNER TABS on either side of kite



ATTENTION

BEFORE FLYING READ FOR SAFE FLYING THE INFORMATION OF THE PACKAGING.



ELO-GAYLA INDUSTRIES, S.A.
CTRA. CARBONERA, S/N
POL.IND. DE ROCES Nº 5
33211 GIJON- ASTURIAS -SPAIN
TEL: 34-985-16 77 83
FAX: 34-985 516 83 76

ALIGN THIS SIDE UP WITH CENTER STICK
POSITION EDGES OF PAPER TO CENTER TAB AND TOP OF KITE